

F105AXP

english

italiano

français

deutsch

español

nederlands

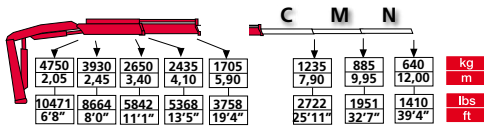


cranes without compromise

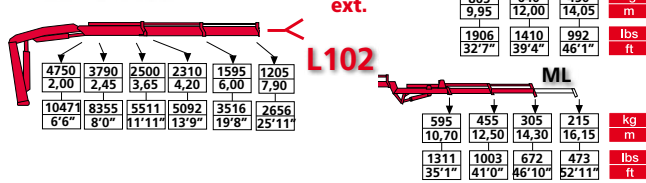
FASSI

CRANES WITHOUT COMPROMISE

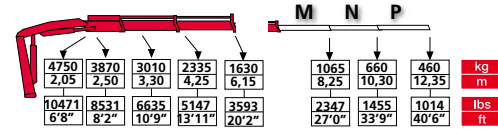
F105AXP.21



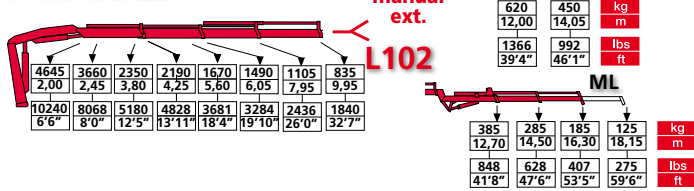
F105AXP.22



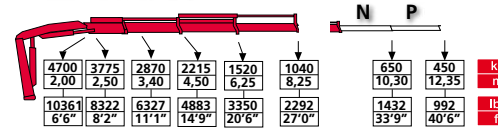
F105ACXP.22



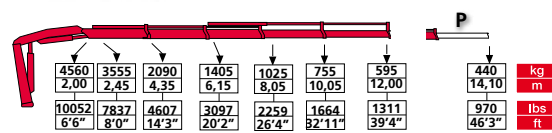
F105AXP.23



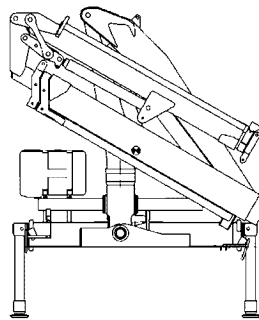
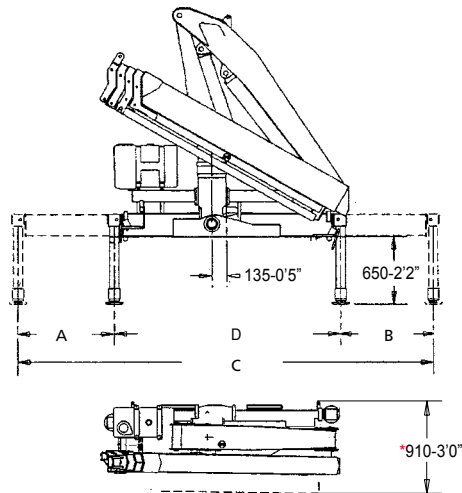
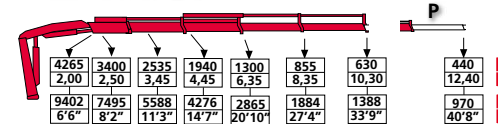
F105ACXP.23



F105AXP.24



F105ACXP.24



L102 320 Kg 705 lbs
ML 20 Kg 44 lbs

	Super			Super		
	STD	Extra	Extra	STD	Extra	Extra
A	900	1255	1640	3925	4635	5465
	2'11"	4'1"	5'4"	12'10"	15'2"	17'11"
B	900	1255	1500	2125	2125	2325
	2'11"	4'1"	4'11"	7'0"	7'0"	7'8"

* With supplementary hoses
Con tubazioni supplementari
Avec tuyauterie supplémentaire
Con tuberías suplementarias
Mit zusaetzlichen leitungen
Met extra functies

- GB** 1) FX500 electronic control system
2) RCH/RCS remote control
3) MPES system
4) XP system

- IT** 1) Sistema di controllo elettronico FX500
2) Radiocomando RCH/RCS
3) Sistema MPES
4) Sistema XP

- FR** 1) Système électronique de contrôle FX500
2) Radiocommando RCH/RCS Evolution
3) MPES système
4) XP système

- ES** 1) Sistema electrónico de control FX500
2) Radiomando RCH/RCS
3) Sistema MPES
4) Sistema XP

- DE** 1) FX500-System, die elektronische Lastmomentbegr.
2) RCH/RCS-Funkfernsteuerung
3) Multi-Power Ausschubsystem
4) System XP

- NL** 1) FX500 elektronisch beveiligingssysteem
2) RCH/RCS Evolutie radiografische afstandsbediening
3) MPES-systeem
4) XP-systeem

	tm	lbs.ft	m	ft	m	ft	°	kNm	lbs.ft	Mpa	psi	l/min	gal/min	l	gal	kg	lbs	mm	ft	mm	ft	mm	ft
F105AXP.21	10,1	73053	6,10	20'1"	1,80	5'10"	390	17,7	13058	31,0	4500	25	7	60	16	1110	2447	2295	7'6"	720	2'4"	2190	7'2"
F105AXP.22	9,7	70160	8,10	26'7"	3,70	12'1"	390	17,7	13058	31,0	4500	25	7	60	16	1215	2678	2295	7'6"	720	2'4"	2190	7'2"
F105AXP.23	9,4	67990	10,15	33'4"	5,70	18'8"	390	17,7	13058	31,0	4500	25	7	60	16	1315	2899	2295	7'6"	725	2'5"	2190	7'2"
F105AXP.24	9,1	65820	12,25	40'1"	7,70	25'3"	390	17,7	13058	31,0	4500	25	7	60	16	1400	3086	2335	7'8"	720	2'4"	2190	7'2"
F105ACXP.22	10,0	72330	6,30	20'8"	2,85	9'4"	390	17,7	13058	31,0	4500	25	7	60	16	1170	2579	2340	7'8"	720	2'4"	2190	7'2"
F105ACXP.23	9,8	70883	8,40	27'6"	4,85	15'10"	390	17,7	13058	31,0	4500	25	7	60	16	1265	2788	2340	7'8"	720	2'4"	2190	7'2"
F105ACXP.24	8,7	62927	10,45	34'3"	6,85	22'5"	390	17,7	13058	29,0	4210	25	7	60	16	1350	2976	2380	7'10"	725	2'4"	2190	7'2"
F105AXP.22/L102	9,7	70160	14,55	47'10"	7,30	23'11"	390	17,7	13058	31,0	4500	25	7	60	16	1530	3375	2320	7'7"	855	2'10"	2190	7'2"
F105AXP.23/L102	9,4	67990	16,55	54'4"	9,30	30'6"	390	17,7	13058	31,0	4500	25	7	60	16	1630	3595	2320	7'7"	855	2'10"	2190	7'2"

Data and descriptions are approximate and not binding - Dati e dimensioni sono forniti a titolo indicativo e non impegnativo - Toutes les données et descriptions sont fournies à titre indicatif, sans engagement
Unverbindliche Angaben, Konstruktionsänderungen vorbehalten - Datos y descripciones todos a título indicativo y no imperativo - Specificaties zijn niet bindend, wijzigingen derhalve voorbehouden



FASSI GRU S.p.A. - Via Roma, 110 - 24021 Albino (Bergamo) ITALY
Tel- +39 035 776400 - Fax +39 035 755020
http://www.fassigroup.com E-mail: fassi@fassigroup.com

