

F120AXP

english

italiano

français

deutsch

español

nederlands

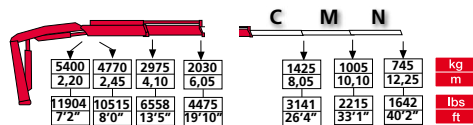


c r a n e s w i t h o u t c o m p r o m i s e

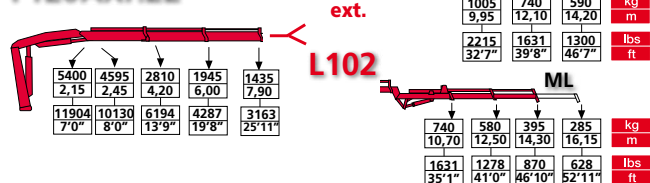
FASSI

CRANES WITHOUT COMPROMISE

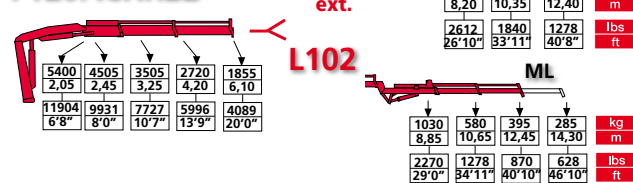
F120AXP.21



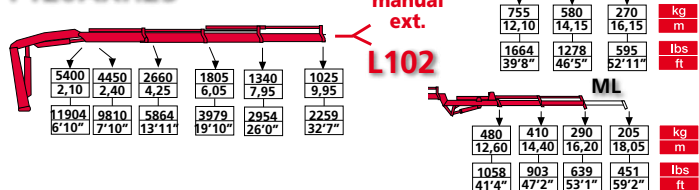
F120AXP.22



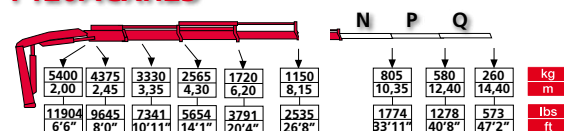
F120ACXP.22



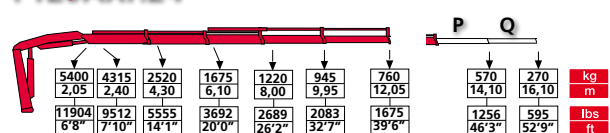
F120AXP.23



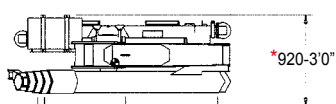
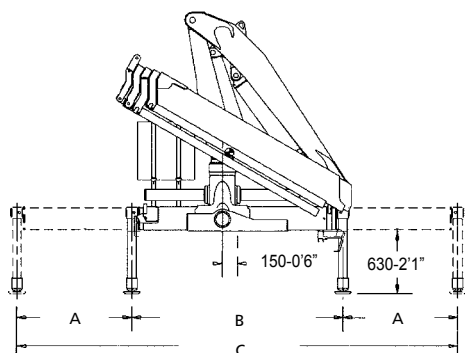
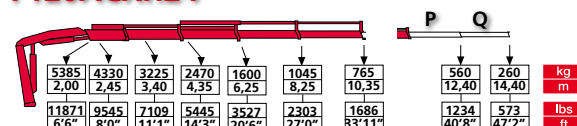
F120ACXP.23



F120AXP.24

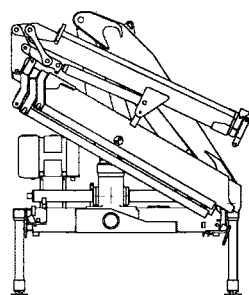


F120ACXP.24



	STD	Extra
A	1150	1705
B	2125	2125
C	4425	5535
	14'6"	18'2"

* With supplementary hoses
 Con tubazioni supplementari
 Avec tuyauterie supplémentaire
 Con tuberías suplementarias
 Mit zusätzlichen leitungen
 Met extra functies



L102 320 Kg 705 lbs
ML 20 Kg 44 lbs

- GB** 1) FX500 electronic control system
 2) RCH/RCS remote control
 3) MPES system
 4) XP System

- IT** 1) Sistema di controllo elettronico FX500
 2) Radiocomando RCH/RCS
 3) Sistema MPES
 4) Sistema XP

- FR** 1) Système électronique de contrôle FX500
 2) Radiocommande RCH/RCS Evolution
 3) MPES système
 4) XP système

- ES** 1) Sistema electrónico de control FX500
 2) Radiomando RCH/RCS
 3) Sistema MPES
 4) Sistema XP

- DE** 1) FX500-System, die elektronische Lastmomentbegr.
 2) RCH/RCS-Funkfern-steuerung
 3) Multi-Power Ausschubsystem
 4) System XP

- NL** 1) FX500 elektronisch beveiligingssysteem
 2) RCH/RCS Evolutie radiografische afstandsbediening
 3) MPES-systeem
 4) XP-systeem

F120AXP.21	12,3	88966	6,25	20'6"	1,95	6'4"	390	17,6	12985	32,0	4640	30	8	70	18	1390	3064	2295	7'6"	765	2'6"	2200	7'3"
F120AXP.22	11,8	85349	8,10	26'7"	3,70	12'1"	390	17,6	12985	32,0	4640	30	8	70	18	1520	3350	2295	7'6"	785	2'7"	2200	7'3"
F120AXP.23	11,3	81733	10,15	33'3"	5,70	18'8"	390	17,6	12985	32,0	4640	30	8	70	18	1640	3615	2380	7'10"	785	2'7"	2200	7'3"
F120AXP.24	11,1	80286	12,30	40'5"	7,75	25'5"	390	17,6	12985	32,0	4640	30	8	70	18	1760	3880	2355	7'9"	785	2'7"	2200	7'3"
F120ACXP.22	11,4	82456	6,30	20'8"	2,85	9'4"	390	17,6	12985	30,5	4430	30	8	70	18	1450	3197	2335	7'8"	825	2'8"	2205	7'3"
F120ACXP.23	11,2	81010	8,35	27'5"	4,85	15'10"	390	17,6	12985	30,5	4430	30	8	70	18	1575	3472	2340	7'8"	825	2'8"	2205	7'3"
F120ACXP.24	11,0	79563	10,50	34'6"	6,90	22'7"	390	17,6	12985	30,5	4430	30	8	70	18	1720	3792	2400	7'10"	825	2'8"	2205	7'3"
F120AXP.22/L102	11,8	85349	14,50	47'7"	7,30	23'11"	390	17,6	12985	32,0	4640	30	8	70	18	1835	4045	2295	7'6"	920	3'0"	2200	7'3"
F120AXP.23/L102	11,3	81733	16,50	54'2"	9,30	30'6"	390	17,6	12985	32,0	4640	30	8	70	18	1955	4310	2400	7'10"	920	3'0"	2200	7'3"
F120ACXP.22/L102	11,4	82456	12,65	41'6"	7,30	23'11"	390	17,6	12985	30,5	4430	30	8	70	18	1765	3891	2425	7'11"	920	3'0"	2205	7'3"

Data and descriptions are approximate and not binding - Dati e dimensioni sono forniti a titolo indicativo e non impegnativo - Toutes les données et descriptions sont fournies à titre indicatif, sans engagement Unverbindliche Angaben, Konstruktionsänderungen vorbehalten - Datos y descripciones todos a título indicativo y no imperativo - Specificaties zijn niet bindend, wijzigingen derhalve voorbehouden



FASSI GRU S.p.A. - Via Roma, 110 - 24021 Albino (Bergamo) ITALY
 Tel- +39 035 776400 - Fax +39 035 755020
 http://www.fassigroup.com E-mail: fassi@fassigroup.com

