

F55AXP

english

italiano

français

deutsch

español

nederlands

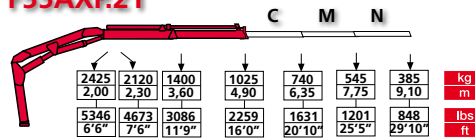


cranes without compromise

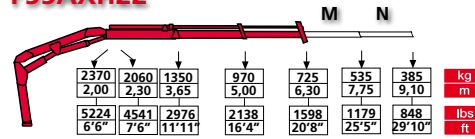
FASSI

CRANES WITHOUT COMPROMISE

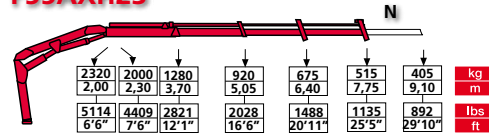
F55AXP.21



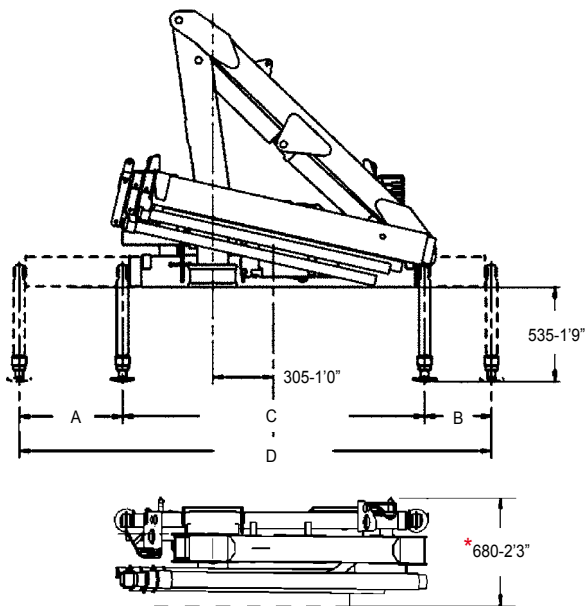
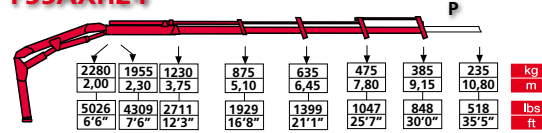
F55AXP.22



F55AXP.23



F55AXP.24



| | | | | | | | |
|----------|------------|--------------|--------------------|----------|------------|--------------|--------------------|
| | STD | Extra | Super Extra | | STD | Extra | Super Extra |
| A | 625 | 985 | 1700 | C | 1920 | 1920 | 1920 |
| | 2'0" | 3'2" | 5'6" | | 6'4" | 6'4" | 6'4" |
| B | 455 | 775 | 1180 | D | 3000 | 3680 | 4800 |
| | 1'5" | 2'6" | 3'10" | | 9'10" | 12'1" | 15'9" |

* With supplementary hoses
 Con tubazioni supplementari
 Avec tuyauterie supplémentaire
 Con tuberías suplementarias
 Mit zusätzlichen leitungen
 Met extra functies

- GB** 1) FX500 electronic control system
 2) RCH/RCS remote control
 3) MPES system
 4) XP system

- IT** 1) Sistema di controllo elettronico FX500
 2) Radiocomando RCH/RCS
 3) Sistema MPES
 4) Sistema XP

- FR** 1) Système électronique de contrôle FX500
 2) Radiocommande RCH/RCS Evolution
 3) MPES système
 4) XP système

- ES** 1) Sistema electrónico de control FX500
 2) Radiomando RCH/RCS
 3) Sistema MPES
 4) Sistema XP

- DE** 1) FX500-System, die elektronische Lastmomentbegr.
 2) RCH/RCS-Funkfern-steuerung
 3) Multi-Power Ausschubsystem
 4) System XP

- NL** 1) FX500 elektronisch beveiligingssysteem
 2) RCH/RCS Evolutie radiografische afstandsbediening
 3) MPES-systeem
 4) XP-systeem

| | tm | lbs.ft | m | ft | m | ft | ° | kNm | lbs.ft | Mpa | psi | l/min | gal/min | l gal | kg | lbs | mm | ft | mm | ft | | | |
|-----------|-----|--------|------|-------|------|-------|-----|-----|--------|------|------|-------|---------|-------|----|-----|------|------|------|-----|-------|------|------|
| F55AXP.21 | 5,0 | 36165 | 5,00 | 16'6" | 1,35 | 4'5" | 370 | 7,6 | 5607 | 27,5 | 3990 | 16 | 4 | 33 | 8 | 615 | 1356 | 2060 | 6'9" | 555 | 1'10" | 1765 | 5'9" |
| F55AXP.22 | 4,9 | 35442 | 6,45 | 21'1" | 2,70 | 8'10" | 370 | 7,6 | 5607 | 27,5 | 3990 | 16 | 4 | 33 | 8 | 665 | 1466 | 2060 | 6'9" | 555 | 1'10" | 1765 | 5'9" |
| F55AXP.23 | 4,7 | 33995 | 7,85 | 25'9" | 4,00 | 13'1" | 370 | 7,6 | 5607 | 27,5 | 3990 | 16 | 4 | 33 | 8 | 715 | 1576 | 2060 | 6'9" | 570 | 1'10" | 1765 | 5'9" |
| F55AXP.24 | 4,6 | 33272 | 9,25 | 30'4" | 5,35 | 17'6" | 370 | 7,6 | 5607 | 27,5 | 3990 | 16 | 4 | 33 | 8 | 750 | 1653 | 2060 | 6'9" | 590 | 1'11" | 1765 | 5'9" |

Data and descriptions are approximate and not binding - Dati e dimensioni sono forniti a titolo indicativo e non impegnativo - Toutes les données et descriptions sont fournies à titre indicatif, sans engagement
 Unverbindliche Angaben, Konstruktionsänderungen vorbehalten - Datos y descripciones todos a título indicativo y no imperativo - Specificaties zijn niet bindend, wijzigingen derhalve voorbehouden



FASSI GRU S.p.A. - Via Roma, 110 - 24021 Albino (Bergamo) ITALY
 Tel: +39 035 776400 - Fax +39 035 755020
 http://www.fassigroup.com E-mail: fassi@fassigroup.com

